

Left-click anywhere to page forward.
Right-click anywhere to page back.
Escape (esc) key to return to normal Windows view.

THE NEW CALIBER LRC SERIES Models Over 30 Years of Innovation!



CALIBER YACHTS



Unique all teak interior (no fiberglass pan) for warmth and comfort.

New LRC SERIES-- Simple Elegance All Teak Interior Style

Caliber Yachts introduces the LRC SERIES (Simple Elegance) models. Improvements have been made to not only the engineering features for which Calibers are already renowned, but now there are dramatic interior enhancements as well. From the premium varnished finish of the teak and....

(Continued on Page 2)

New LRC SERIES-- Caliber Smart Electrical System™

A few years ago the average DC power draw used to be less than 100 amp-hours during an average day on the water. Today, there is a plethora of navigation electronics and convenience appliances that make cruising safer and more pleasurable. Therefore, usage has doubled to 200 amp-hours. Today's sailor needs a more sophisticated system to handle these additional loads....

(Continued on Page 3)



Large-frame alternator delivers charging power when you need it.

New LRC SERIES-- Safety Feature Upgrades and Additions

Caliber's never-ending drive to improve upon the safety features of their yacht lines has resulted in substantial improvements in the new LRC SERIES models. Safety is not limited to improvements only, but new equipment has also been added.

An example includes an improvement to an existing already reliable system--the Fuel Control Panel. Though functionally it is still possible to completely switch over from one fuel delivery system to another, it is now....

(Continued on Page 5)



Dual fuel systems for safety are combined with dual huge capacity tanks.

(Continued) Simple Elegance All Teak Interior Style

holly sole, up to the hand-crafted headliner-- the interior has no labor saving cold hard fiberglass liners to disturb a warm interior. One step into the cabin, and you'll immediately feel the warmth completely surrounding you. The interior reflects the timeless beauty of teak taken to a new level. Simply put--Simple Elegance.



Skyscreens are standard on the 40 and 47 LRC Series of yachts.

Slide-away Skyscreens™ are now standard on both the 40LRC Series and 47LRC Series models (optional 35LRC Series). These are built-in and flush mounted in the ceiling, framed by teak. Not only do they look good, but they are highly functional as well. If the sun is directly overhead, heating the interior, a simple pull of the shade draws it closed to block the sun quickly without blocking all the ventilation. At night, if you want to allow air to flow in but not insects, then you can simply pull the screen over the opening and you have a

well-sealed barrier while still ventilating the cabin.

Improvements in the galley are numerous, starting



All teak interior for true warmth and comfort. Premium varnish finish is standard on all LRC Series models.

with an unseen one. The expanded foam insulation in the icebox has been increased even more for superb refrigeration efficiency. Additionally, the drainage system has been improved to help lock in cold while draining away water. The heavily insulated icebox lids, with their high thermo characteristics, now have a gas-assisted lifting device to make accessing the icebox easier.

In creating the new LRC Series of yachts, Caliber is building an even more functional interior. One that will



Increased thickness of the refrigerator and icebox and a new drainage system.

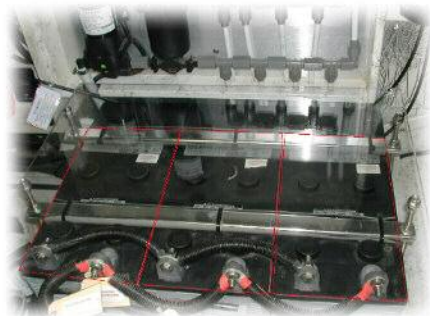
stand the test of time. A classic warmth you'll never tire of. This makes your investment in a Caliber one you can trust is not faddish.

Caliber LRC Series models will be every bit as appealing in the decades to come, as they are today.

- ☆ A Simple Elegance created by the timeless beauty of an all-teak interior
- ☆ Cabinet doors with positive locks and louvered teak battens for ventilation
- ☆ Passageway doors redesigned with solid teak frames, teak panel inserts and teak batten louvers.
- ☆ Passageway doors upgraded with high quality marine handles and locks
- ☆ Built-in overhead Skyscreen™ hatches with flush mounted rollaway screens and sun shade protection
- ☆ Improved cabinet storage in head areas
- ☆ Corian countertops standard on 47LRC Series (optional on other models)
- ☆ Teak batten hull liners throughout interior
- ☆ Improved companionway steps
- ☆ Improved cabinetry in galley, including custom installed microwave oven
- ☆ Improved icebox design with greater insulation and gas-assisted lift on icebox lid
- ☆ Higher fixed sea rails throughout on all countertops
- ☆ Extra spot lights added in cabins for reading

(Continued) Caliber Smart Electrical System™

Increasing capacity in a marine electrical system is not as simple as adding more batteries. A marine system is not like what we are most familiar with, an automotive system. If it were, then it would be easy to hook



Set of heavy-duty AGM marine batteries easily accessible and securely locked down.

up an automotive alternator to a large bank of automobile batteries and you could leave the dock with all the power you need. A heavy duty marine system calls for a different solution. A well-engineered marine system can give you all the power you need. And more importantly, provide that power safely and reliably. A good marine system employs the latest in marine electronics technology. A more sophisticated, intelligent one--The Caliber Smart Electrical System™.

At it's core are large deep cycle batteries as standard equipment. The LRC Series models come with a pair of high acceptance deep-cycle 200 amp

AGM (Absorbed Glass Mat) marine batteries (three in the 47LRC Series model). These are very large batteries which are carefully located for great accessibility. Even more convenient, adding an optional bat-



High quality AC/DC electrical panel is only one component of a well-engineered electrical system.

tery is a breeze. But these powerhouses require specialized charging and monitors to be able to supply their power reliably.

Therefore, an important step is the removal of the standard automobile alternator that comes with most engines (including marine engines). Caliber then replaces it with a high-output, small frame alternator. This alternator is capable of producing 110 amps of charging power. Yet this high output alternator is simply not enough to insure the batteries get topped off properly. Monitoring is also essential. To take advantage

of the increased alternator power it's important to make the high output alternator work efficiently and safely with the deep-cycle batteries. Therefore, within the Caliber Smart Electrical System™ is a specialized "smart regulator." This regulator can be considered the communicator between the batteries and the alternator. It controls the charging power to the batteries in a sophisticated step sequence regulated not only by the voltage, but by temperature too-- both criteria are monitored for optimal charging sequence. Should there be a malfunction in the system, it would be indicated by an error lamp and associated audio buzzer which is included as standard equipment. It's a valuable safety feature on a yacht that depends upon reliable battery power.

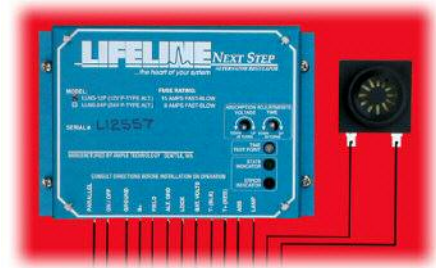
Battery charging while the engine is running is fully automatic and does not require any manual intervention by the captain. If the captain wants to know the status of the charging regime at any time, a status lamp is incorporated in the smart regulator for this purpose. Another important built-in safety feature requires that the starting battery is isolated from the house batteries. Even though it is isolated, no switching is necessary after starting the engine to charge all the batteries. In the event that the starter battery fails, there is an emergency parallel switch in the system that makes it simple to transfer the power from the house batteries to start the engine.

Battery charging while the engine is running is fully automatic and does not require any manual intervention by the captain. If the captain wants to know the status of the charging regime at any time, a status lamp is incorporated in the smart regulator for this purpose.

Another important built-in safety feature requires that the starting battery is isolated from the house batteries. Even though it is isolated, no switching is necessary after starting the engine to charge all the batteries. In the event that the starter battery fails, there is an emergency parallel switch in the system that makes it simple to transfer the power from the house batteries to start the engine.



Battery cut-off switch for ultimate security and safety and emergency transfer switch if the need arises.



The intelligence behind step-charging - A must for any heavy-duty marine electrical system.

The *Caliber Smart Electrical System™* is designed to be not only safe today, but in the future too. The entire electrical circuit of the yacht is protected with a circuit protection device (CPD). Every circuit has to go through the main CPD. To help insure this integrity, for future equipment, there are additional positive and negative distribution posts available. These posts are convenient attachment points for all future electronics. For even further safety, a manual emergency cut-off switch is installed that is capable of shutting down the entire DC house battery system quickly.

Once again, with all these features, and more, Caliber leads the way with well-engineered safety features. The creation of the *Caliber Smart Electrical System™* is a prime example of continuing innovation.

- ☆ Designed to provide lots of power safely and reliably
- ☆ High-output alternator replaces standard alternator

- ☆ Hi-capacity, deep cycle AGM marine house batteries
- ☆ Smart regulator for step charging efficiency, audible alarm, temperature regulated, with visual charging sequence
- ☆ Dedicated battery banks for independence between engine starting battery and house batteries
- ☆ Emergency parallel switch for house battery use as back up engine starting battery.
- ☆ Circuit Protection Device (CPD) to protect all circuits in system
- ☆ Convenient negative and positive distribution posts for additional equipment under CPD
- ☆ Manual shut-down switch fully protects entire circuit
- ☆ All digital meters on panel
- ☆ Optional large-frame alternator for 290 amps of charging power (dual alternators for backup reliability).
- ☆ Anchor windlass prewire run is now standard

Newest Feature! -- Caliber Smart Stern Rail™

The *Caliber Smart Stern Rail™* is a well-engineered, extra strong all stainless steel stern pulpit which allows for a large variety of optional equipment to be installed securely and safely--Plug and play. A lot of thought has gone into this important feature unique to the LRC Series of yachts. As one example, an optional cantilever bimini design makes access to the stern of the deck more convenient during docking situations.

- ☆ Cantilever supports for mounting a hard top over helm area
- ☆ Cantilever supports for mounting an array of adjustable solar panels
- ☆ Cantilever supports allows easy-access to aft deck area for docking
- ☆ Plug and Play davits which can be removed or swung out of the way.
- ☆ Extra strong dingy motor mounts and lifting device for 4-cycle heavy outboard motors
- ☆ Extra strong mounts for life raft, man overboard equipment, or grill
- ☆ Mounting area for wind generator equipment
- ☆ Extended heavy-duty stern rail for mounting extra solar panels



Unique all stainless stern pulpit highly engineered for the secure attachment of equipment required of a true seaworthy yacht.

* Optional equipment in text and photo

(Continued) Safety Feature Upgrades and Additions

easier with the intelligent auto-routing of the fuel controlled by three-way switching valves. Additionally, you can now choose which filter system to use with which tank. There are so many improvements made to the entire fuel delivery and storage systems, it's now called the *Caliber Smart Fuel System™*.

Additional hardware includes a vacuum gauge which will indicate when a filter element needs replacing. A coarse fuel filter has also been added to trap large contaminants in the fuel before it reaches the primary Racor filters. There's even more.

An electric fuel pump is now standard equipment on the SEries yachts. This pump is not only installed as a backup pump to the engine's built-in fuel pump, but is also rated above the normal fuel draw of the engine. So in essence, this pump is a constant fuel polishing (cleaning) pump helping to insure the fuel in the tanks are being cleaned anytime the engine is running. Dual pick-up tubes are installed so the electric pump can be turned on (even when the engine is not running), allowing dedicated fuel polishing to proceed.

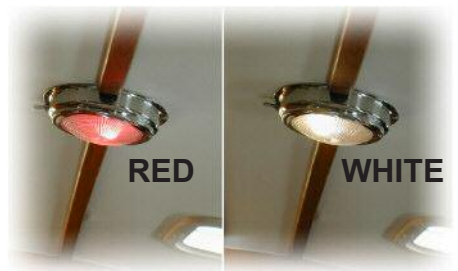
The emergency electric bilge pump has been upgraded for the new LRC SEries models. There is now a dedicated bilge pump capable of pumping 2,000 gallons per hour in an emergency. To be confident it will switch on when required, a special automatic electronic switch is standard. It operates on electrical conductivity of water and has no moving parts that could fail.

Another improvement in the LRC SEries is an upgrade to the below the water-line sea-valves and thru-hulls. As with many other Caliber safety features, there is now backup reliability. The sea-valves are double attached.

They are attached using the threaded thru-hull and if this attachment should fail, the valves remain intact because they are also attached

using mechanical fasteners.

Night sailing on the SEries is made easier and safer with the addition of dual color lights throughout the entire interior. There are clear white lights when anchored out, or docked in port. Plus, there are red lights for better vision during night passages. A small but meaningful feature during those night watches when consistent night vision is critical.



Red night vision and white lens are standard on the new LRC SEries of yachts.



Dripless Shaft Seal on the LRC SEries yachts.

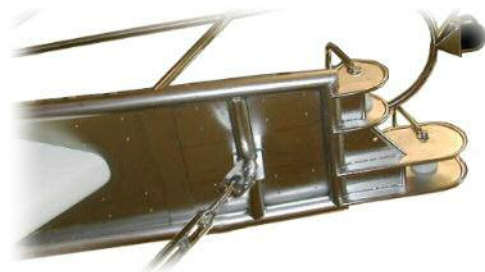
Another small, but valuable feature on the SEries--the installation of a Dripless Shaft Seal. Stopping that annoying dripping of the propeller shaft is now possible. Since it's water-cooled, it helps prevent the propeller shaft from heating up. It's standard on the 40LRC SEries

and 47LRC SEries models, and optional on the 35LRC SEries model.

Topsides, there have been upgrades to the sail handling gear, anchor handling gear, plus the bow and stern pulpits.

Upgrades to sail handling deck gear include more powerful cabin top halyard winches. Traveler control lines are now led directly to the cockpit on all LRC SEries models.

Anchor handling gear has been improved
(Continued next page)



Heavy-duty all stainless steel anchoring platform custom engineered with many features.

Upgraded sea-valves and thru-hulls.

Escape (esc) key to return to normal Windows view.

with the introduction of the *Caliber Smart Anchoring System™*. Standard on all the LRC Series models. The all stainless steel, heavy duty, dual anchor platform keeps the anchors out away from the hull to prevent damage while raising and lowering. Keeping the anchors off the deck also means you keep mud off the deck.

Furthermore, decks are mud free because of the easily accessible anchor rode storage lockers. The anchors can be rapidly recovered with the rode going directly into special lockers designed to prevent chain pile-ups. Once recovered, they can be easily washed down later. Even chain deck scratching is eliminated because special scratch preventers serve as channels on which the chain can run. These scratch preventers are easily replaceable in the future.

The anchors and rode will ride on specially designed, deep channel high-density composite rollers. Rollers designed to keep the rode from jumping during raising and lowering, and for holding the stowed anchor secure. Specially designed stainless bails also help to keep rode and anchors in place. The rollers are mounted on heavy duty braces designed with a beaded edge to help prevent chafe. Once anchored, the rode can be led aft through heavy, custom designed positive-locking anchoring chocks.

The positive locking mechanism makes rode jumping a problem of the past. And for the ultimate in chafe protection, there is a *Zero Chafe Anchor Point™*. It's a solid and extremely secure, centerline, water level, anchoring point.



Extended stainless steel bow pulpit makes it safer to be on the foredeck.

Valuable when you need holding power in storm conditions.

Even after 30 years, the innovations never cease. All these new features increase the safety, reliability, and ease of use of the new 2009 LRC Series models.

- ☆ *Caliber Smart Fuel System™* with improved auto-routing of fuel for better control of filters and tanks
- ☆ Additional coarse filter, larger Racor filters, electric fuel pump, and vacuum gauge are now standard
- ☆ Dedicated 2,000 gph emergency bilge pump with reliable zero-moving parts electronic float switch
- ☆ Double secure sea-valves on all below water thru-hulls
- ☆ Interior dome lights with red/white lens for night running and anchored/docked uses
- ☆ Dripless Shaft Seal (optional 35LRC Series)
- ☆ Caliber Safety Sea Rails wrap cockpit and foredeck with security
- ☆ *Caliber Smart Anchoring System* designed for safe and secure anchoring
- ☆ *Zero Chafe Anchor Point™* designed for storm conditions anchoring
- ☆ Upgraded Harken deck hardware
- ☆ Traveler control lines led directly to cockpit
- ☆ Upgraded cabin top winches for easier sail control
- ☆ Improved low odor waste discharge system
- ☆ Improved engine room insulation
- ☆ Engine room blower standard
- ☆ Optional Super SSB Grounding Plane



Caliber Yachts, Inc.

4551 107th Circle North

Clearwater, FL 33762

Phone: 1-727-573-0627 Fax: 1-727-573-2721

Email: caliberlrc@caliberyacht.com

www.caliberyacht.com

35 LRC Series



40 LRC Series



47 LRC Series

